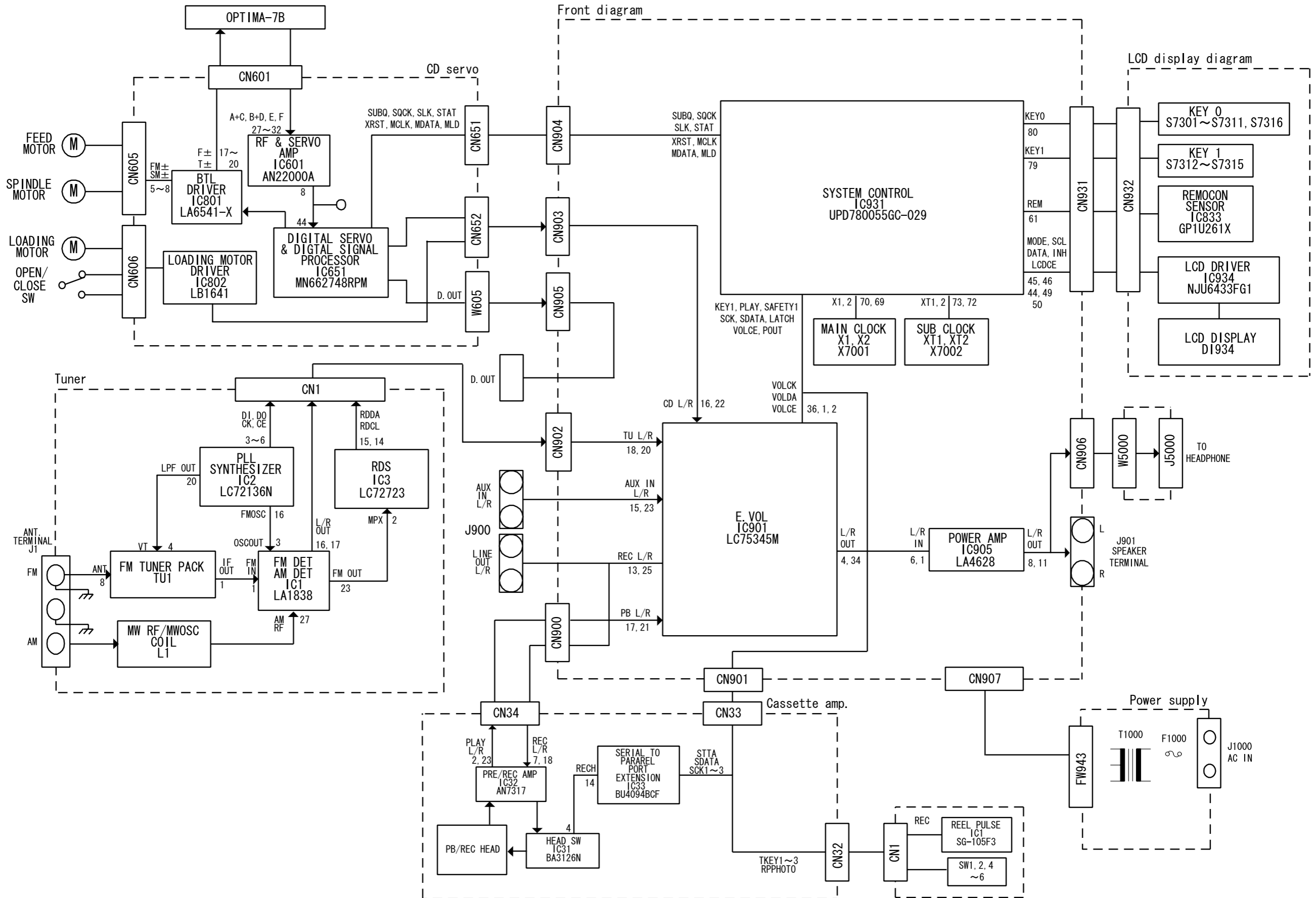


Block diagram



Standard schematic diagrams

■ Front circuit

6

5

4

3

2

1

A

B

C

D

E

F

G

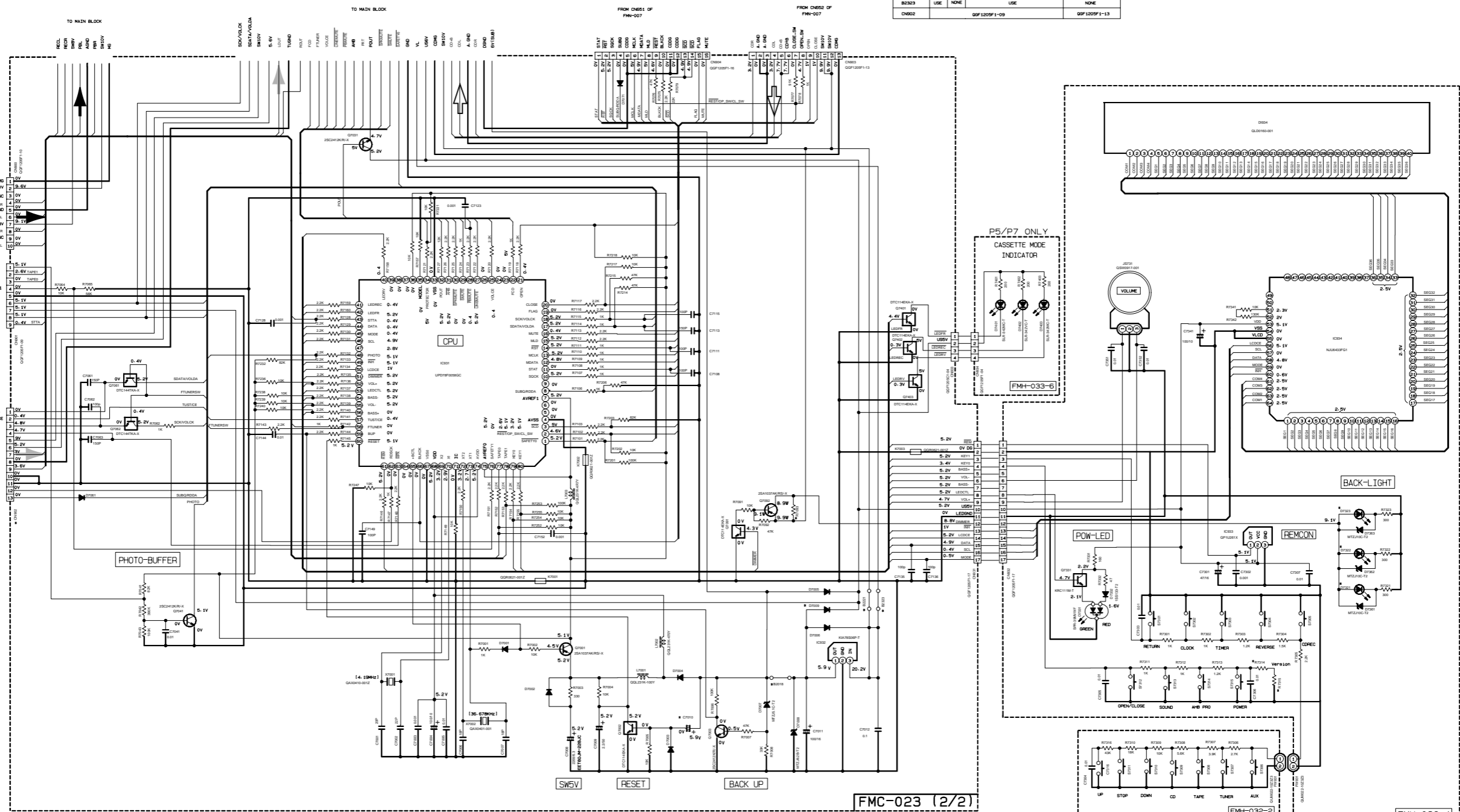
H

I

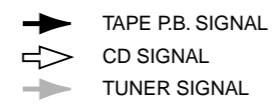
DTC144TKA-X 47K OPEN	DTC144TKA-X 10K OPEN	DTC144EK-X 10K
Q7061/Q7062	Q7002	Q7091/Q7401/Q7402/Q7403

MARK

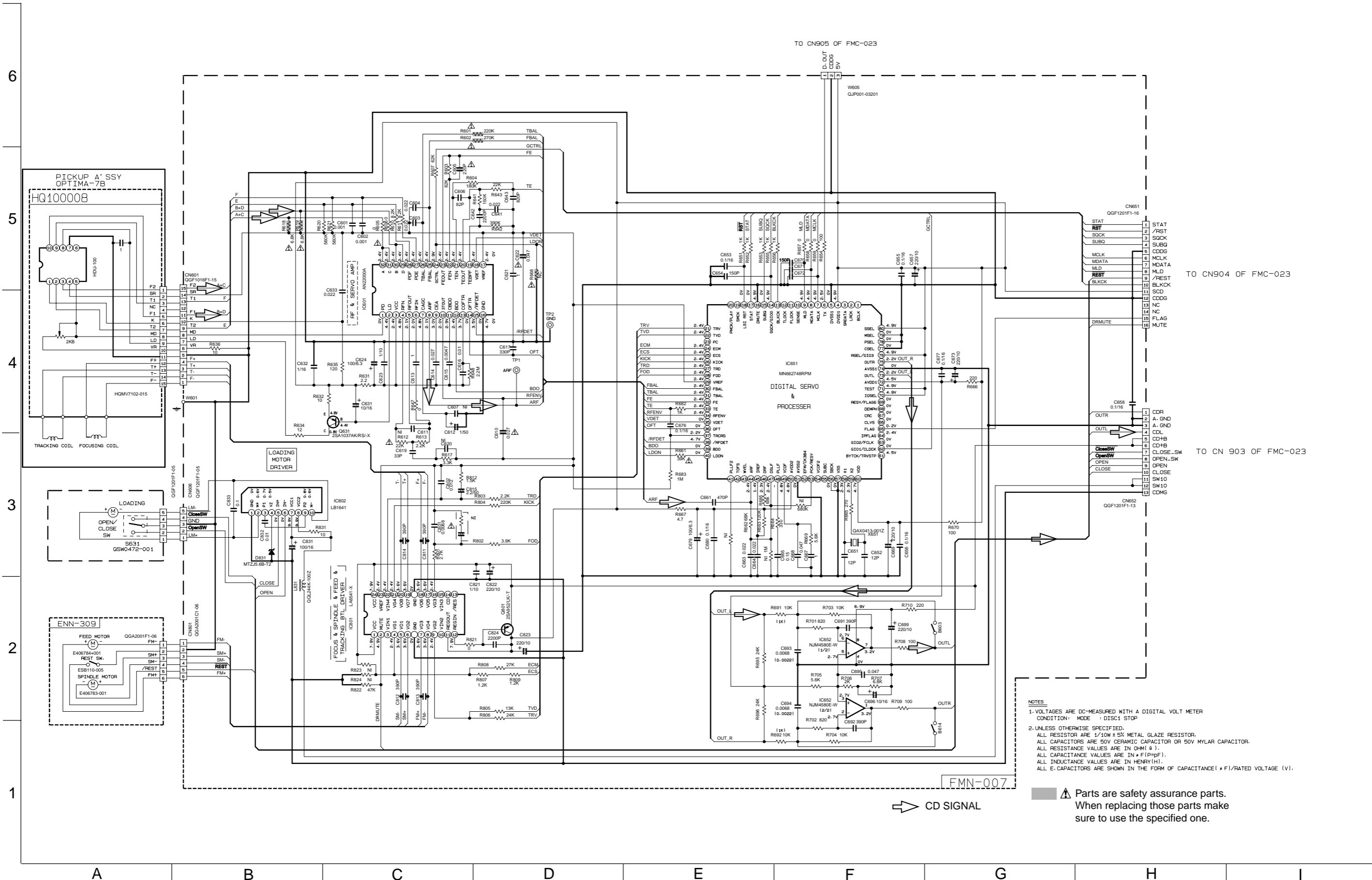
VERSION	PS-PS	UX-PS			UX-PR	
ITEMS	(L)	(A)	(UBA/FAN/UP/UBA/FAM)	(L)	(U)	(E/E)
R7059	1K	1K	1K	1K	1K	1K
C7361	BLUE	BLUE	BLUE	BLUE	BLUE	BLUE
D7363	BLUE	BLUE	BLUE	BLUE	BLUE	BLUE
D7071/8M	8M					D7071
R7314 (VERSION)	10K	B/W	B/W	B/W	B/W	B/W
R7315 (VERSION)	50K	47K	47K	47K	3.3K	1.5K
C7010	4.7/50	10/50				10/50
D7009	NONE	USE		NONE		USE
R0018	USE	NONE		USE		NONE
R0021	NONE	USE		NONE		USE
R0023	USE	NONE		USE		NONE
C0002			QSP1209F1-09			QSP1209F1-13



NOTES
 1. VOLTAGES ARE DC-MEASURED WITH A DIGITAL VOLT METER OR OSCILLOSCOPE WITHOUT INPUT SIGNAL.
 CONDITION --- CD STOP MODE
 2. UNLESS OTHERWISE SPECIFIED,
 ALL RESISTORS ARE 1/10W ±5% METAL GLAZE RESISTOR.
 ALL CAPACITORS ARE CERAMIC CAPACITOR OR MYLAR CAPACITOR.
 ALL RESISTANCE VALUES ARE IN OHM(Ω).
 ALL CAPACITANCE VALUES ARE IN nF(nPF).
 ALL INDUCTANCE VALUES ARE IN μH(μMH).
 ALL E-CAPACITORS ARE SHOWN IN THE FORM OF CAPACITANCE(μF)/RATED VOLTAGE (V).
 ALL DIODES ARE IN 1SS133-T7 UNLESS SPECIFIED.



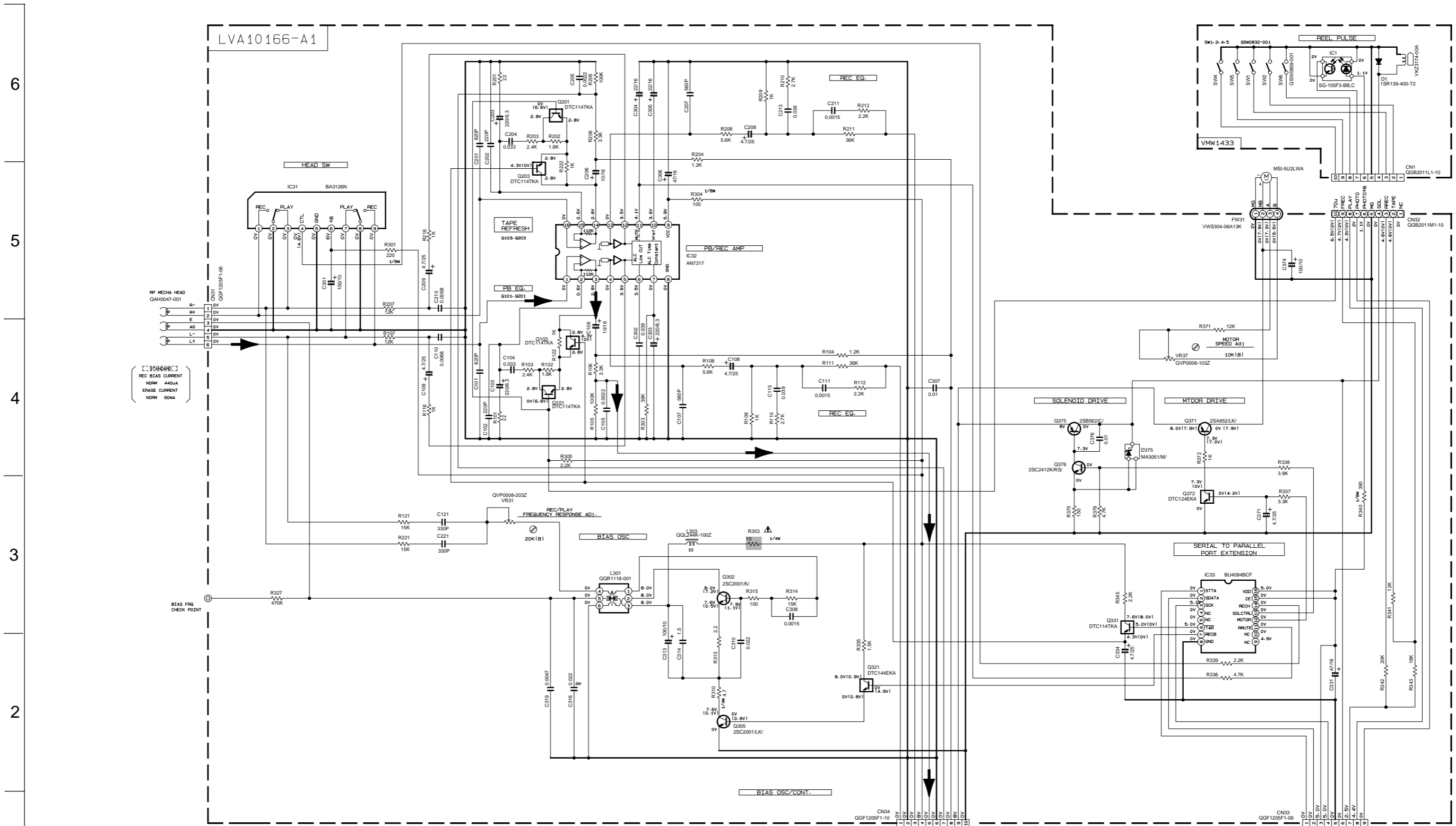
CD servo circuit



- NOTES**
1. VOLTAGES ARE DC-MEASURED WITH A DIGITAL VOLT METER
CONDITION: MODE : DISC1 STOP
 2. UNLESS OTHERWISE SPECIFIED.
ALL RESISTOR ARE 1/10W ± 5% METAL GLAZE RESISTOR.
ALL CAPACITORS ARE 50V CERAMIC CAPACITOR OR 50V MYLAR CAPACITOR.
ALL RESISTANCE VALUES ARE IN OHM(Ω).
ALL CAPACITANCE VALUES ARE IN PICO(F)(pF).
ALL INDUCTANCE VALUES ARE IN HENRY(H).
ALL E-CAPACITORS ARE SHOWN IN THE FORM OF CAPACITANCE(μF)/RATED VOLTAGE (V).

▲ Parts are safety assurance parts.
When replacing those parts make sure to use the specified one.

Cassette amplifier circuit



REC BIAS CURRENT
NORM 440µA
ERASE CURRENT
NORM 60mA

NOTES

1. VOLTAGES ARE DC-MEASURED WITH A DIGITAL VOLT METER OR OSCILLOSCOPE WITHOUT INPUT SIGNAL. CONDITION : MECHA STOP MODE

2. UNLESS OTHERWISE SPECIFIED, RESISTORS ARE 1/10W ±5% METAL GLAZE RESISTOR. ALL RESISTANCE VALUES ARE IN Ω(MHΩ). ALL CAPACITORS ARE CERAMIC CAPACITOR OR MYLAR CAPACITOR. ALL CAPACITANCE VALUES ARE IN nF(µF). ALL INDUCTANCE VALUES ARE IN mH(MMH). ALL E-CAPACITORS ARE SHOWN IN THE FORM OF CAPACITANCE (µF)/RATED VOLTAGE (V). POLYPROPYLENE CAPACITOR

PARTS	NAME	REF. NO
	FA1A4Z or DTC114TKA	Q101-Q201 Q103-Q203 Q331
	FA1F4H or DTC124EKA	Q372

Parts are safety assurance parts. When replacing those parts make sure to use the specified one.

▶ TAPE P.B. SIGNAL

TO CN90 OF FMC-023

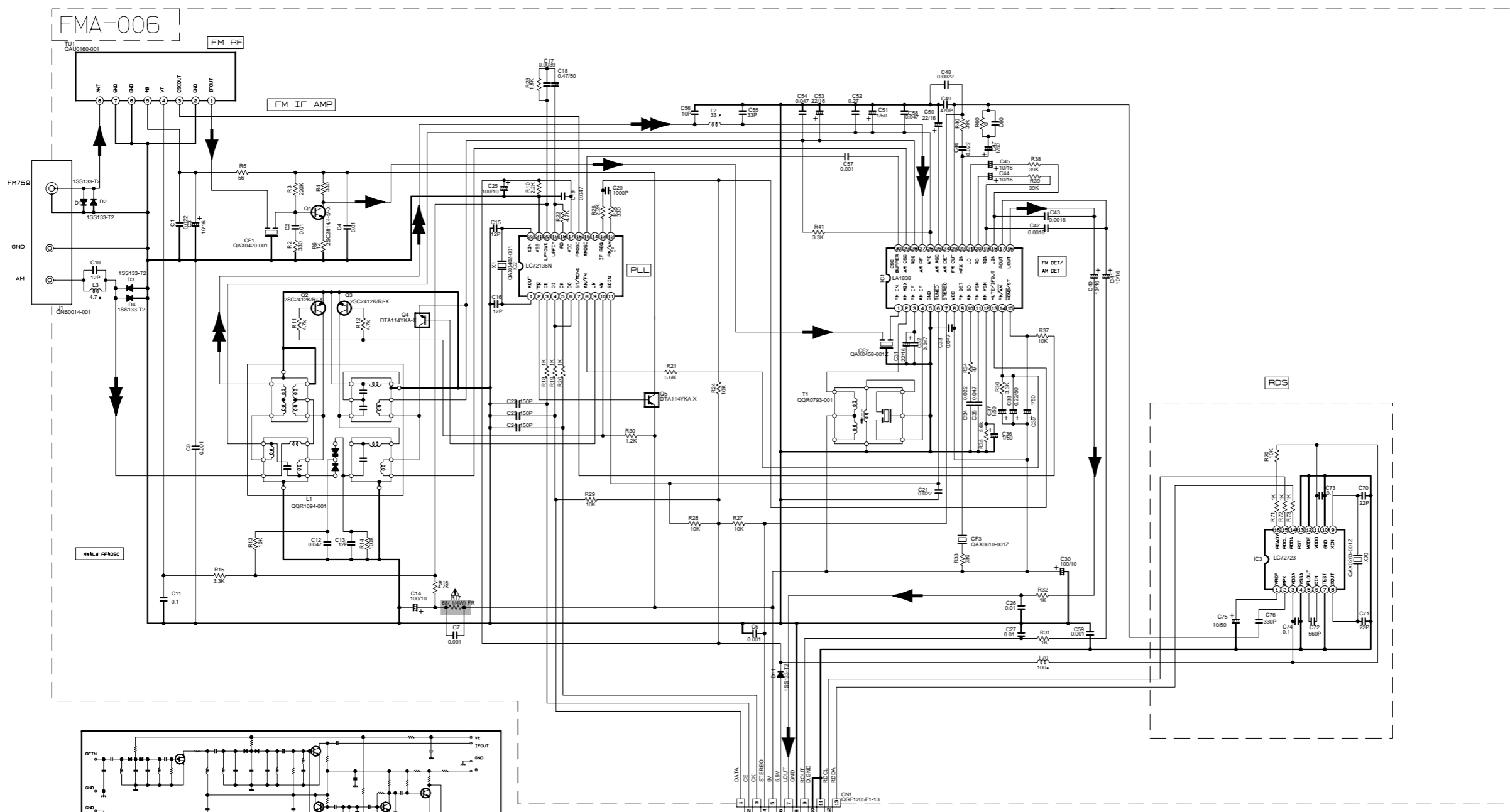
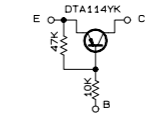
TO CN901 OF FMC-023

■ Tuner circuit (E)

6
5
4
3
2
1

- NOTES
1. VOLTAGES ARE DC-MEASURED WITH A DIGITAL VOLT METER.
 2. ALL RESISTORS ARE 1/8W ±5% METAL GLAZE RESISTOR.
 3. ALL RESISTANCE VALUES ARE IN Ω(MΩ).
 4. ALL CAPACITANCE VALUES ARE IN pF(PpF).
 5. ALL E. CAPACITORS ARE SHOWN IN THE FORM OF CAPASITANCE (nF)/RATED VOLTAGE (V).
 6. SI DIODES (▶) ARE ALL 1SS133-T THAT CAN BE CHANGED TO SIMILAR DIODE SUCH AS MA165 OR HSS104J.
 7. PARTS NO. OF TRANSISTORS ARE AS FOLLOWS.
Q1 2SC2814/4-5/-X Q2-Q3 2SC2412K/R/-X
Q4-Q5 DTA114YKA-X

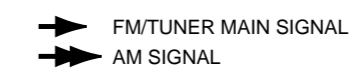
B. INSIDE OF DIGITAL TRANSISTORS ARE SHOWN AS FOLLOWS.



CONDITION	PIN NO.	1	2	3	4	5	6	7	8	9	10	11	12	13	14	15	16	17	18	19	20	21	22	23	24	25	26	27	28	29	30
IC1	FM NO SIGNAL	3.6	8.9	3.6	3.6	0	5.0	5.0	8.9	8.9	1.3	0.1	0	0.9	7.8	7.8	4.3	4.3	4.3	4.3	3.4	2.8	3.4	0	0	3.6	3.6	3.6	3.6	2.7	
	FM 60dB STEREO	3.6	8.9	3.6	3.6	0	5.0	5.0	8.9	8.9	1.3	4.3	0	0.9	7.8	7.8	4.3	4.3	4.3	4.3	3.4	2.8	3.4	0	0	3.6	3.6	3.6	3.6	2.7	
	AM NO SIGNAL	3.5	9.0	3.5	3.5	0	5.0	5.1	9.0	2.6	1.3	0	0	0.9	4.7	5.5	4.3	4.3	4.3	3.3	3.2	2.8	ust	0.7	0.7	3.6	3.6	3.6	3.6	2.1	
IC2	FM NO SIGNAL	2.5	0	0	5.0	4.9	5.0	7.9	7.8	3.6	6.1	5.1	0	0	0	0	2.5	5.1	0.9	0.9	3.8	0	2.3								

Tr. NO.	Q1	Q5				
PIN NO.	E	C	B	E	C	B
FM 87.5MHz NO SIGNAL	0	7.1	0.85	8.9	8.8	0
AM 52KHz NO SIGNAL	0	0	0	9.0	0	8.9

Tr. NO.	Q2	Q3				
PIN NO.	E	C	B	E	C	B
AM 52KHz NO SIGNAL	0	0	0.7	0	0.7	0
AM 144KHz NO SIGNAL	0	0	0.3	0	0.3	3.6

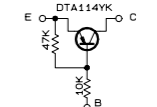


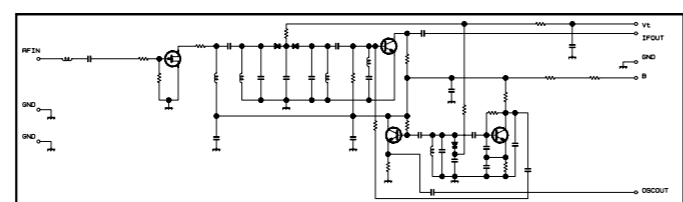
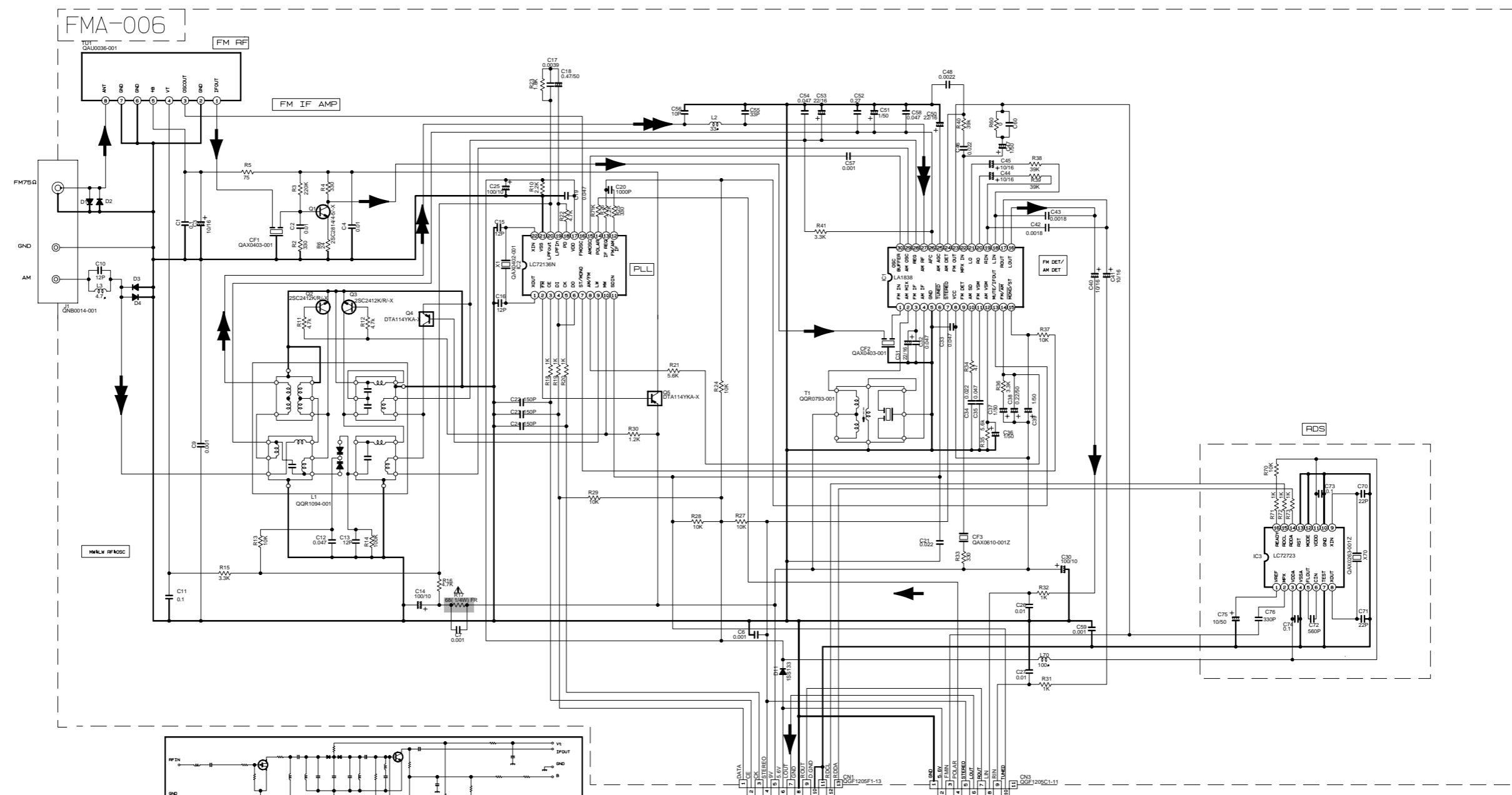
▲ Parts are safety assurance parts. When replacing those parts make sure to use the specified one.

A B C D E F G H I

■ Tuner circuit (EE)

6
5
4
3
2
1

- NOTES
1. VOLTAGES ARE DC-MEASURED WITH A DIGITAL VOLT METER.
 2. ALL RESISTORS ARE 1/8W ±5% METAL GLAZE RESISTOR.
 3. ALL RESISTANCE VALUES ARE IN OHM(Ω).
 4. ALL CAPASITANCE VALUES ARE IN μF(P=pF).
 5. ALL E. CAPASITORS ARE SHOWN IN THE FORM OF CAPASITANCE (μF)/RATED VOLTAGE (V).
 6. SI DIODES (▷) ARE ALL 1SS133-T THAT CAN BE CHANGED TO SIMILAR DIODE SUCH AS MA165 OR HSS104J.
 7. PARTS NO. OF TRANSISTORS ARE AS FOLLOWS.
Q1 Q2 2SC2814/4-S/-X Q3 Q3 2SC2412K/R/-X
Q4 Q5 DTA114YK-X
- B. INSIDE OF DIGITAL TRANSISTORS ARE SHOWN AS FOLLOWS.
- 



CONDITION	PIN NO.	1	2	3	4	5	6	7	8	9	10	11	12	13	14	15	16	17	18	19	20	21	22	23	24	25	26	27	28	29	30
IC1	FM NO SIGNAL	3.6	8.9	3.6	3.6	0	5.0	5.0	8.9	8.9	1.3	0.1	0	0.9	7.8	7.8	4.3	4.3	4.3	4.3	3.4	3.4	2.8	3.4	0	0	3.5	3.5	3.6	3.6	2.7
	FM 60dB STEREO	3.6	8.9	3.6	3.6	0	0	5.0	8.9	8.9	1.3	4.3	0	0.9	7.8	7.8	4.3	4.3	4.3	4.3	3.4	3.4	2.8	3.4	0	0	3.6	3.6	3.6	3.6	2.7
	AM NO SIGNAL	3.5	9.0	3.5	3.5	0	5.0	5.1	9.0	2.6	1.3	0	0	0.9	4.7	5.5	4.3	4.3	4.3	3.3	3.2	2.8	3.4	0.7	0.7	3.6	3.6	3.6	3.6	2.1	
IC2	FM NO SIGNAL	2.5	0	0	5.0	4.9	5.0	7.9	7.8	3.6	6.1	5.1	0	0	0	0	2.5	5.1	0.9	0.9	3.8	0	2.3								

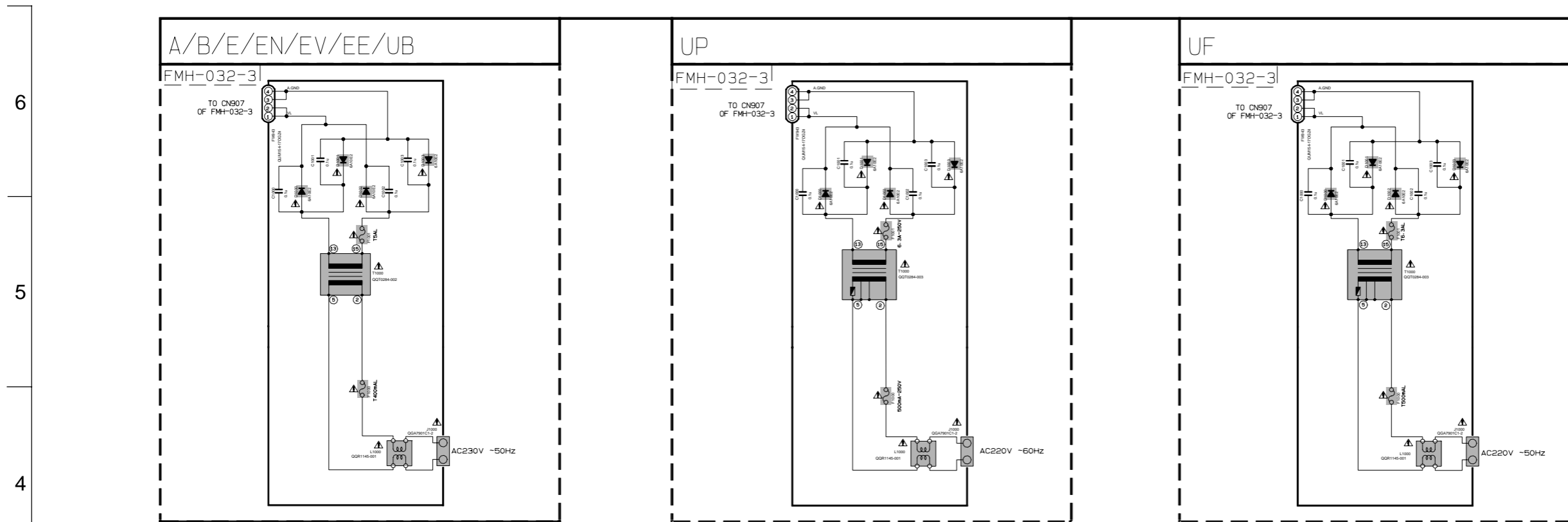
Tr. NO.	Q1		Q5			
PIN NO.	E	C	B	E	C	B
FM 87.5MHz NO SIGNAL	0	7.1	0.85	8.9	8.8	0
AM 522kHz NO SIGNAL	0	0	0	9.0	0	8.9

Tr. NO.	Q2		Q3			
PIN NO.	E	C	B	E	C	B
AM 522kHz NO SIGNAL	0	0	0.7	0	0.7	0
AM 144kHz NO SIGNAL	0	0	0.3	0	0.3	0.3

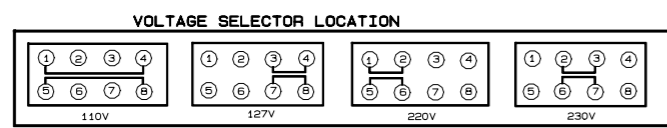
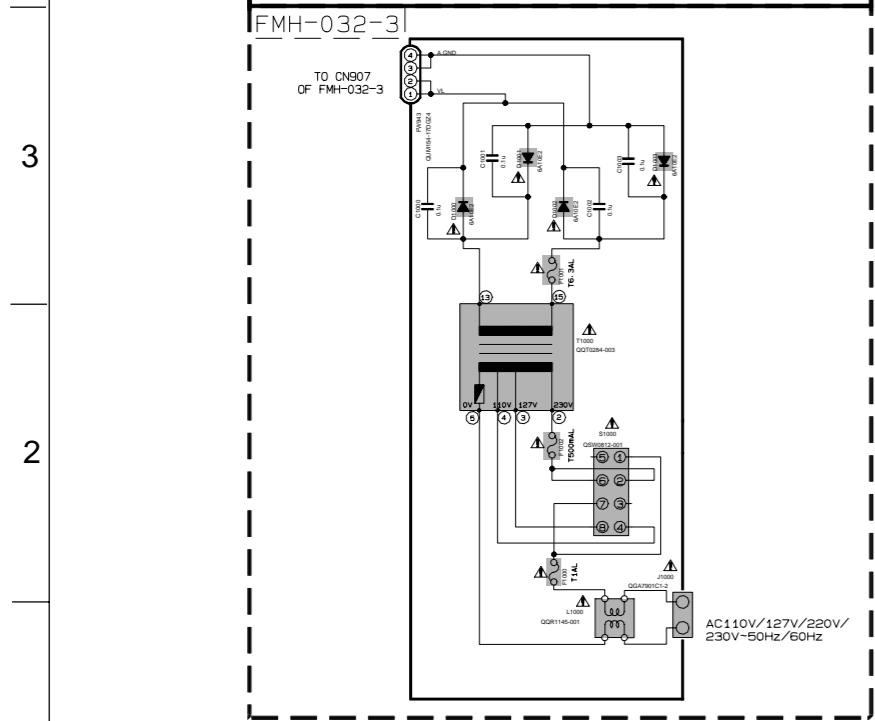
FM/TUNER MAIN SIGNAL
 AM SIGNAL
 Parts are safety assurance parts. When replacing those parts make sure to use the specified one.

A B C D E F G H I

Power supply circuit



US/UT/UX/UY/UN/UW



EXPLANATION OF OVERALL OF SCHEMATIC

MODEL : UX-P3/UX-P3R/UX-P4R

SHEET NUMBER	MODEL NUMBERS TO BE APPLIED	CIRCUITS DESCRIPTION
1/8	UX-P3/UX-P3R/UX-P4R	· PRIMARY WITH MAINS TRANSFORMER
2/8	UX-P3/UX-P3R/UX-P4R	· DC REGULATOR, AUDIO OUTPUT · EXTERNAL INPUT, SOURCE SELECTOR SWITCH
3/8	UX-P3/UX-P3R/UX-P4R	· LCD DISPLAY/SYSTEM CONTROL/USERS KEY CONTROL
4/8	UX-P3/UX-P3R/UX-P4R	· CD SERVO AND CD SYSTEM CONTROL · CD CHANGER MECHANISM CONTROL
5/8	UX-P3/UX-P3R/UX-P4R	· TAPE DECK MECHANISM CONTROL · TAPE CIRCUITS SUCH AS PRE-AMP AND BIAS
6/8	UX-P3	· TUNER RF/IF/FM MULTIPLEX (ONLY FOR A, UB, UF, UN, UP, US, UT, UW, UX, UY)
7/8	UX-P3R/UX-P4R	· TUNER RF/IF/FM MULTIPLEX (ONLY FOR B, E, EN, EV)
8/8	UX-P3REEM	· TUNER RF/IF/FM MULTIPLEX (ONLY FOR EE)

NOTE : MARK (*) IS TO SHOW DEVIATION IN VERSIONS. DETAILS ARE EXPLAINED NEAR MARK.

VERSION CODES

A	: AUSTRALIA
B	: U.K
E	: CONTINENTAL EUROPE
EE	: RUSSIA
EN	: NORDIC COUNTRIES
EV	: EASTERN EUROPE
UB	: HONG KONG
UF	: CHINA
UN	: INDONESIA
UP	: KOREA
UW	: SOUTH AFRICA
UT	: TAIWAN
UX	: SAUDI ARABIA
UY	: ARGENTINA
US	: SINGAPORE AND UNIVERSAL

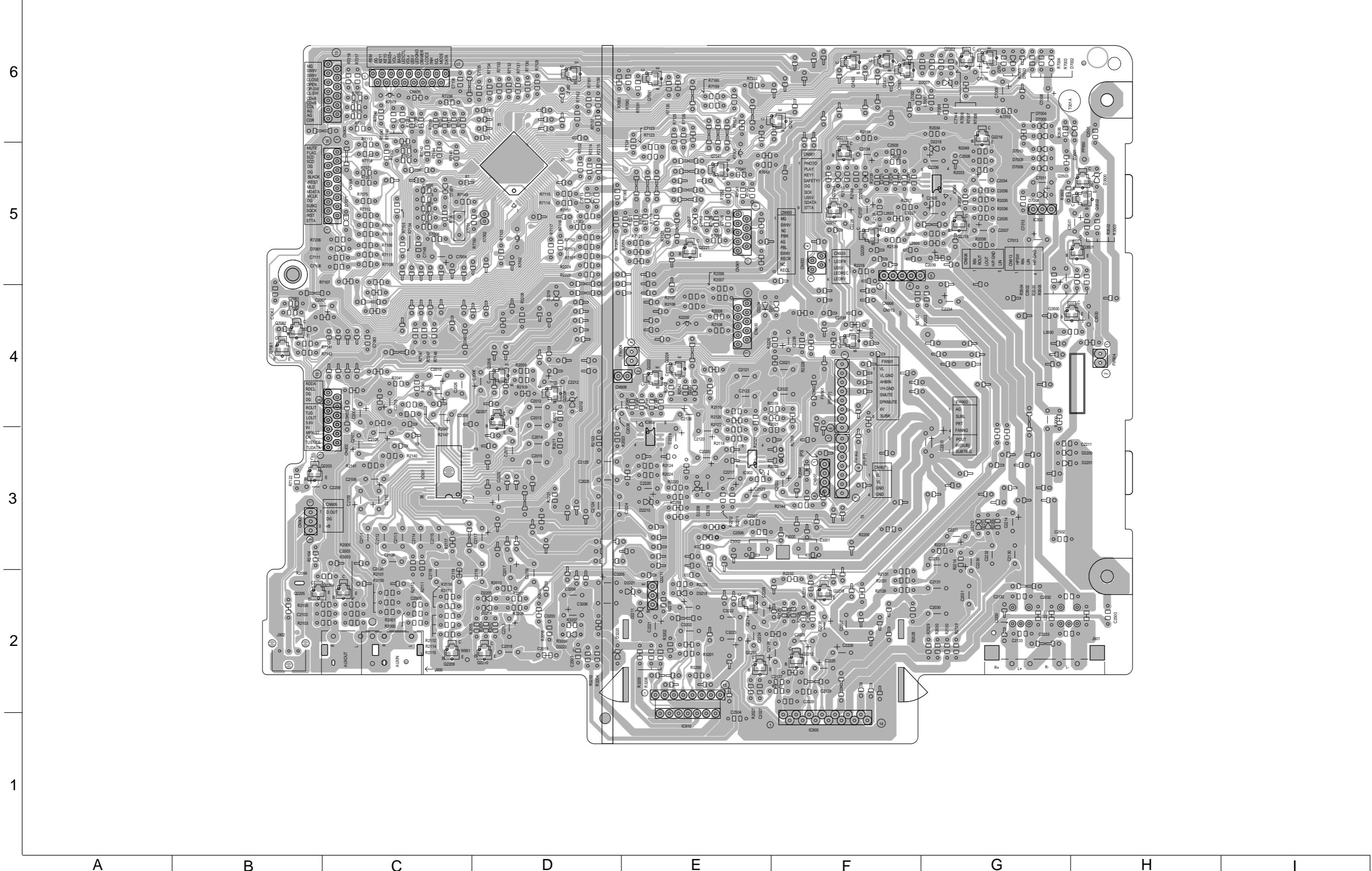
EXCEPT ALL OF ABOVE

- NOTES
- VOLTAGES ARE DC-MEASURED WITH A DIGITAL VOLT METER OR OSCILLOSCOPE WITHOUT INPUT SIGNAL.
CONDITION --- CD STOP MODE
INSIDE BRACKET VALUES ARE OTHER FUNCTIONS
 - UNLESS OTHERWISE SPECIFIED, RESISTORS ARE 1/8W ± 5% CARBON RESISTOR. ALL RESISTANCE VALUES ARE IN OHM(S). ALL CAPACITORS ARE CERAMIC CAPACITOR OR MYLAR CAPACITOR. ALL CAPACITANCE VALUES ARE IN pF(pFpF). ALL INDUCTANCE VALUES ARE IN mH(mHmH). ALL E-CAPACITORS ARE SHOWN IN THE FORM OF CAPACITANCE (pF)/RATED VOLTAGE (V).

Parts are safety assurance parts. When replacing those parts make sure to use the specified one.

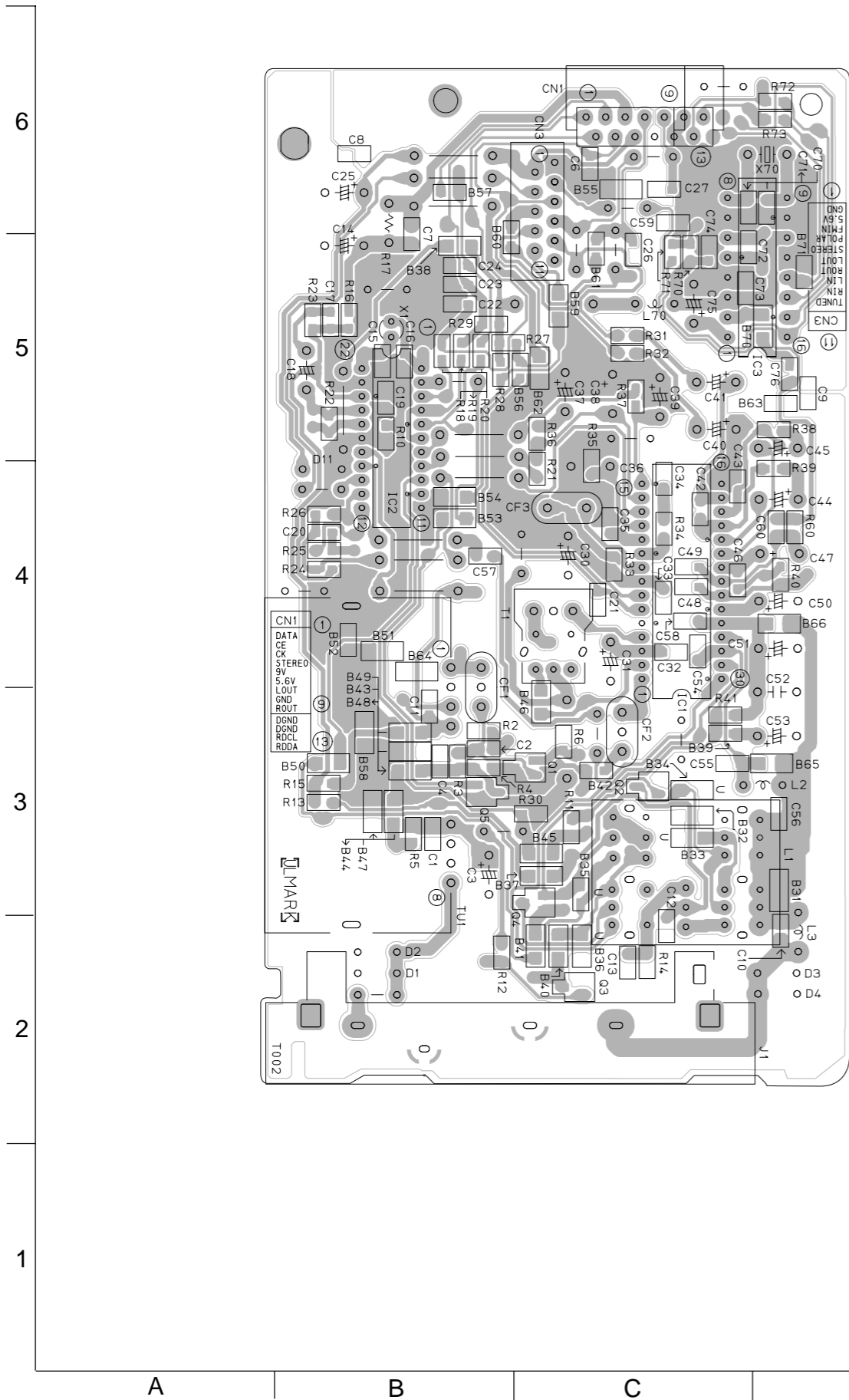
Printed circuit boards

■ Main board Block No. 01



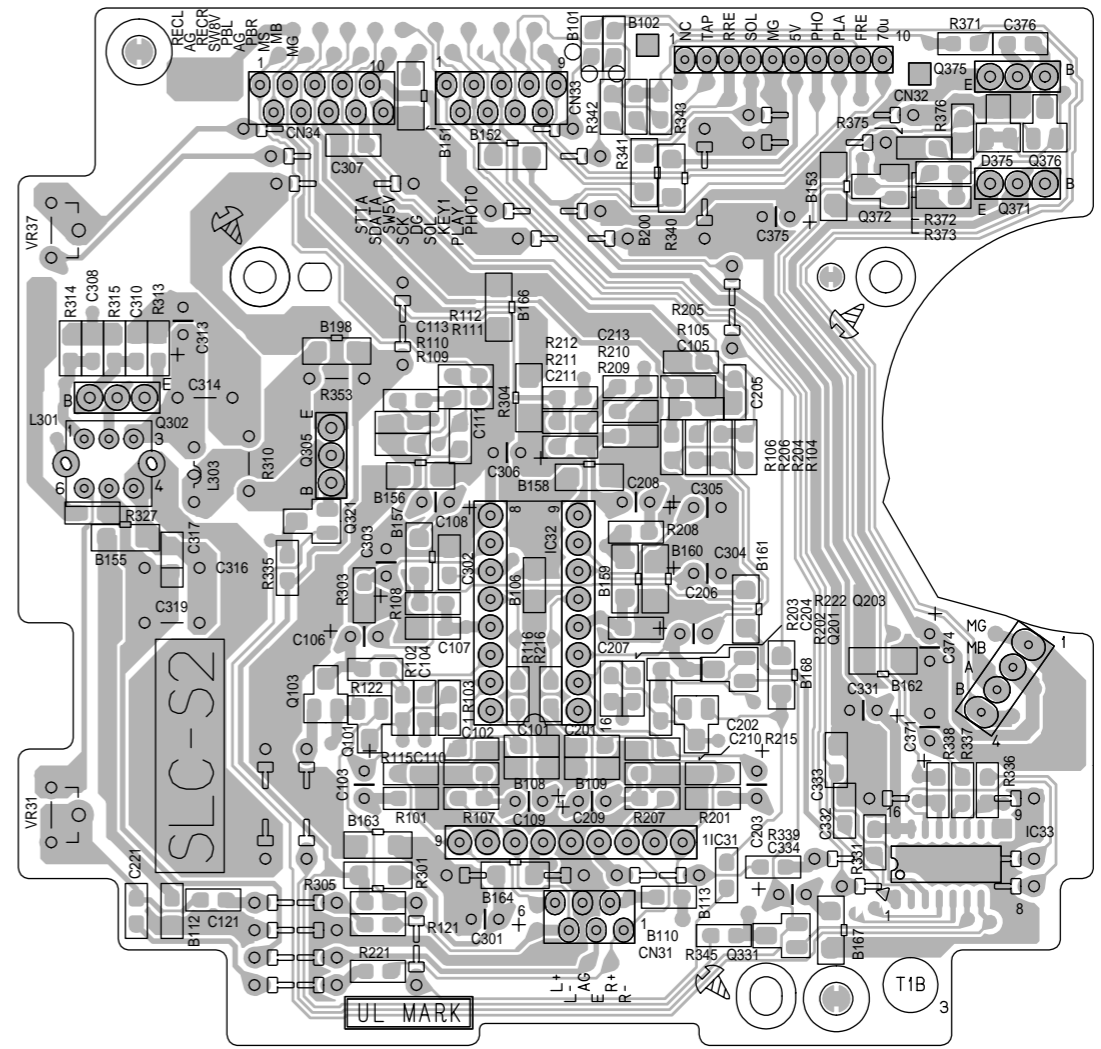
■ Tuner board

Block No. 04



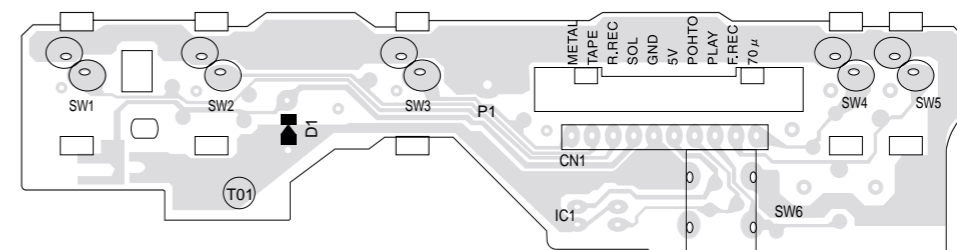
■ Head amplifier board

Block No. 05



■ Cassett switch board

Block No. 06



<<MEMO>>